

# REFERENCE PLAN OF PARTS OF LOTS 1 & 3, DL 1934, ODYD, PLAN 21560.

PLAN EPP95912

PURSUANT TO SECTION 99(1)(e) OF THE LAND TITLE ACT  
AND SECTION 44 OF THE COMMUNITY CHARTER.

BCGS 82E.083  
SCALE 1:500 METRIC



THE INTENDED PLOT SIZE OF THIS PLAN IS 432 mm IN WIDTH  
BY 559 mm IN HEIGHT (C-size) WHEN PLOTTED AT A SCALE  
OF 1:500 METRIC.

## LEGEND

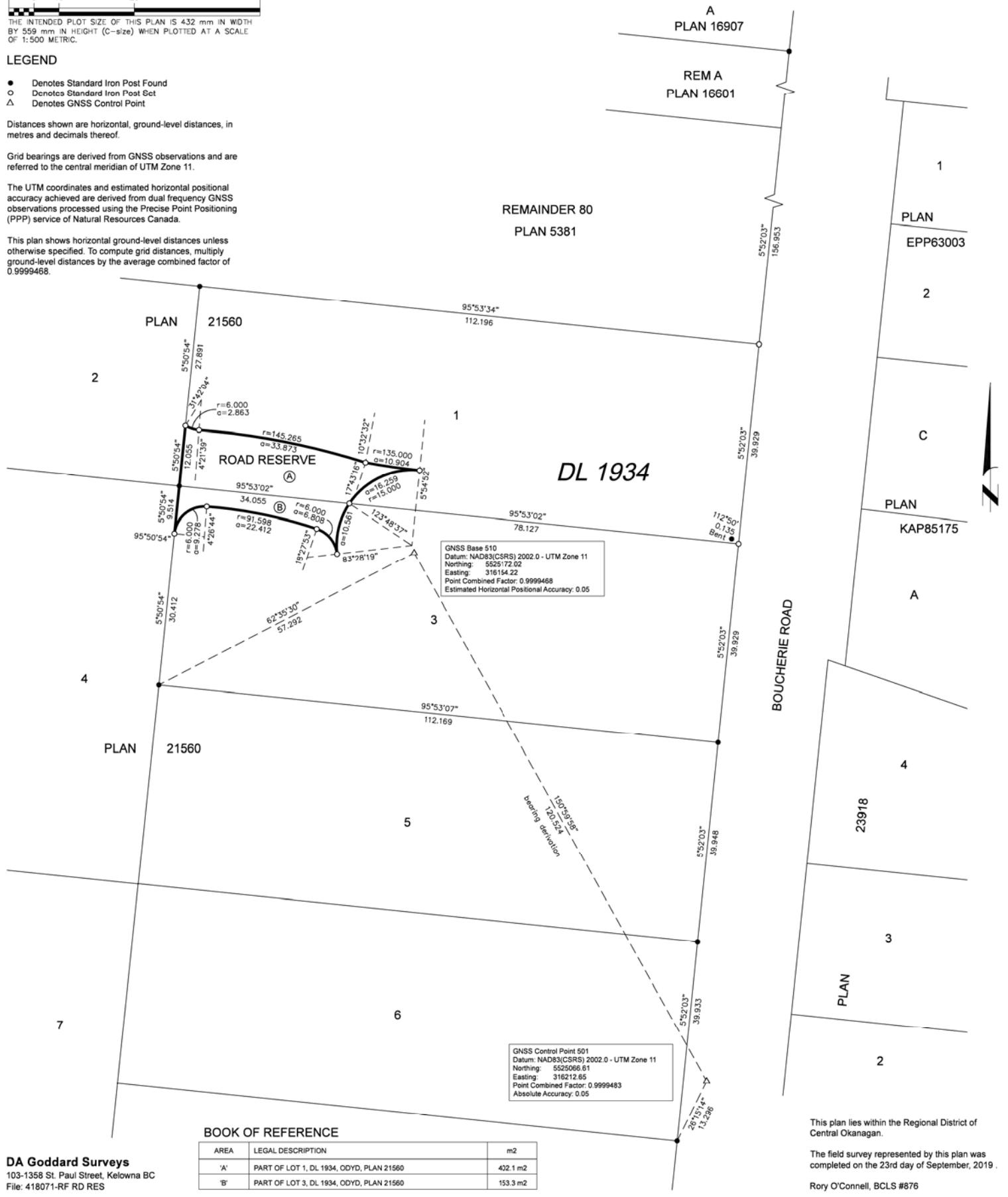
- Denotes Standard Iron Post Found
- Denotes Standard Iron Post Set
- △ Denotes GNSS Control Point

Distances shown are horizontal, ground-level distances, in metres and decimals thereof.

Grid bearings are derived from GNSS observations and are referred to the central meridian of UTM Zone 11.

The UTM coordinates and estimated horizontal positional accuracy achieved are derived from dual frequency GNSS observations processed using the Precise Point Positioning (PPP) service of Natural Resources Canada.

This plan shows horizontal ground-level distances unless otherwise specified. To compute grid distances, multiply ground-level distances by the average combined factor of 0.9999468.



GNSS Base 510  
Datum: NAD83(CSR5) 2002.0 - UTM Zone 11  
Northing: 552572.02  
Easting: 316154.22  
Point Combined Factor: 0.9999468  
Estimated Horizontal Positional Accuracy: 0.05

GNSS Control Point 501  
Datum: NAD83(CSR5) 2002.0 - UTM Zone 11  
Northing: 5525066.61  
Easting: 316212.65  
Point Combined Factor: 0.9999463  
Absolute Accuracy: 0.05

### BOOK OF REFERENCE

AREA	LEGAL DESCRIPTION	m2
'A'	PART OF LOT 1, DL 1934, ODYD, PLAN 21560	402.1 m2
'B'	PART OF LOT 3, DL 1934, ODYD, PLAN 21560	153.3 m2

DA Goddard Surveys  
103-1358 St. Paul Street, Kelowna BC  
File: 418071-RF RD RES

This plan lies within the Regional District of Central Okanagan.

The field survey represented by this plan was completed on the 23rd day of September, 2019.

Rory O'Connell, BCLS #876