

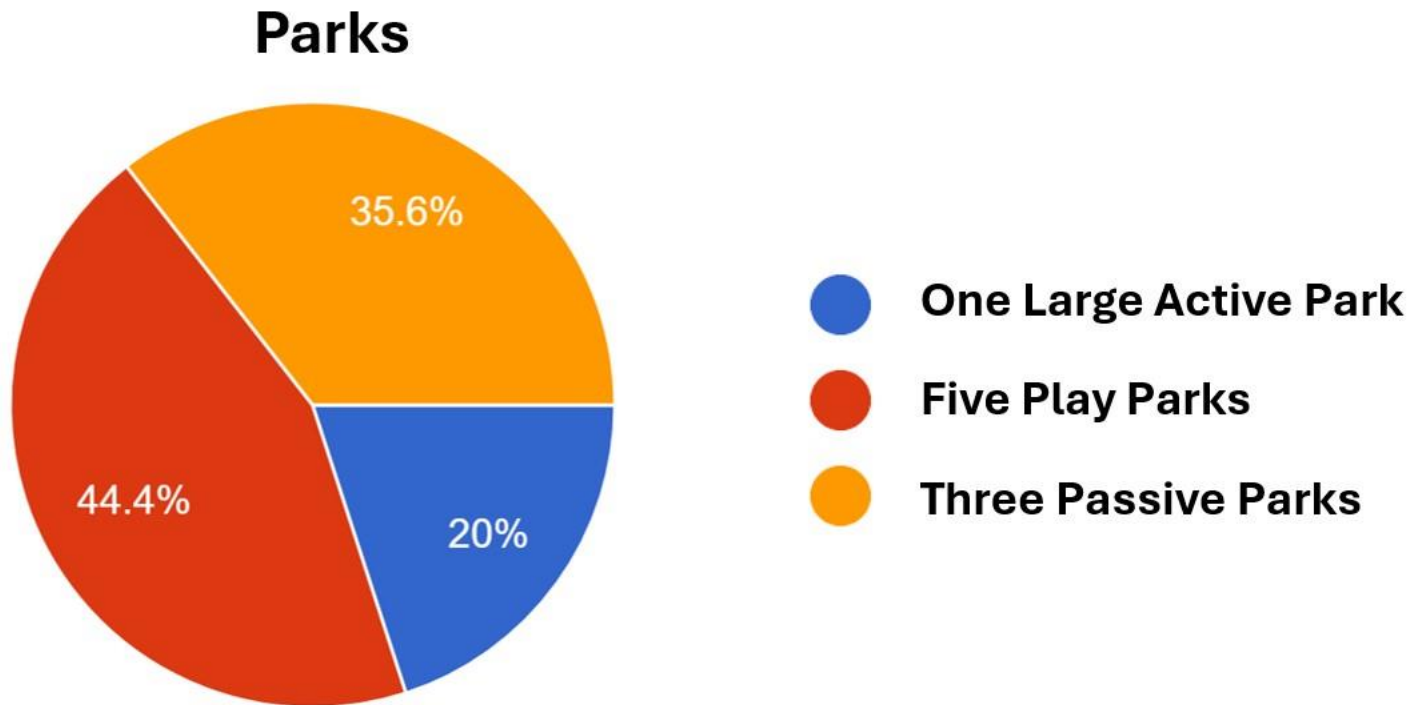
LVHCA Wishlist

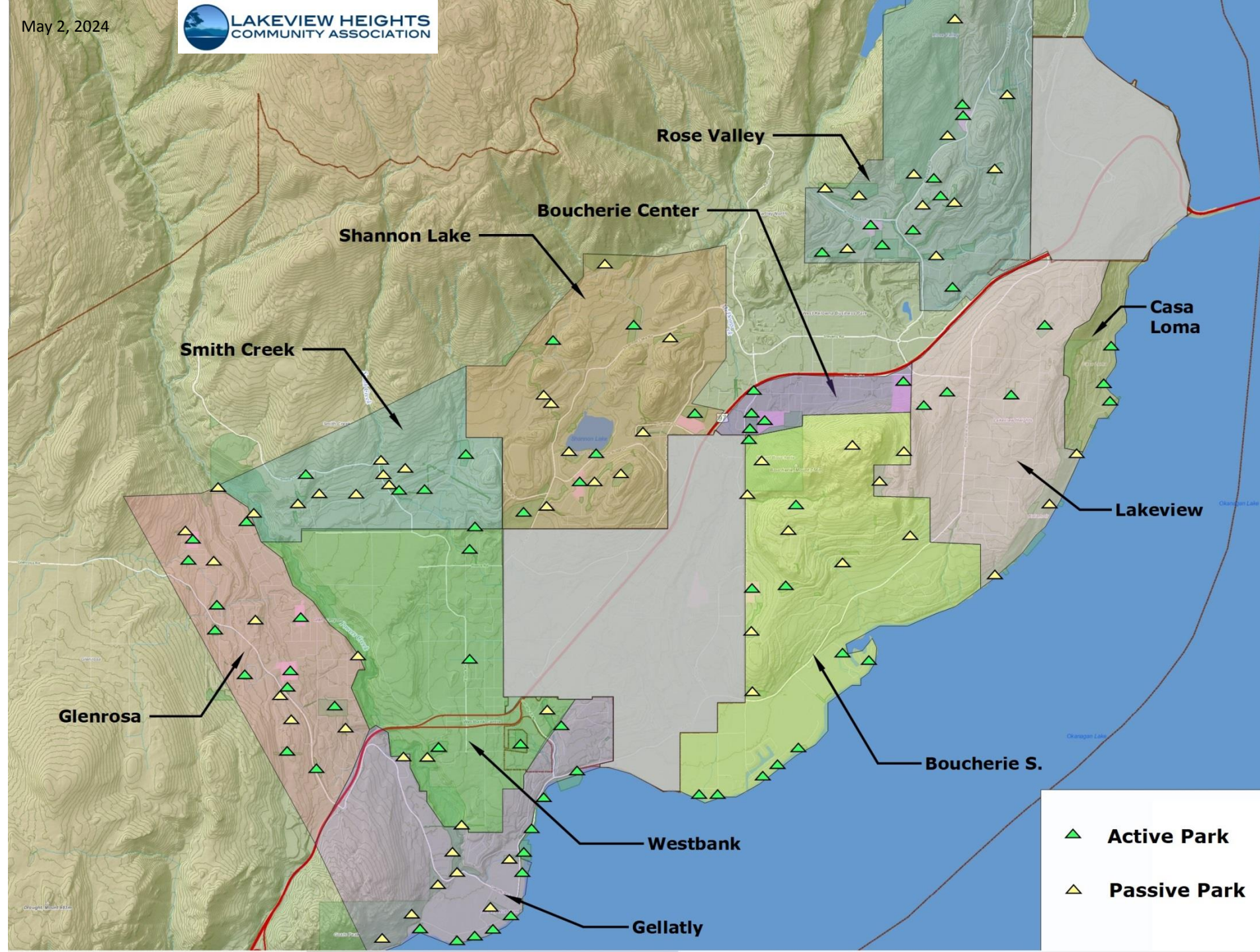
Conducted two surveys in the last few years with consistent results

- More Active Parks
- Bike Path Walkways
- Agricultural Walkways
- Homelessness and Theft

Survey shows Parks at top of the list for amenities needed.

Active Parks received the most support.





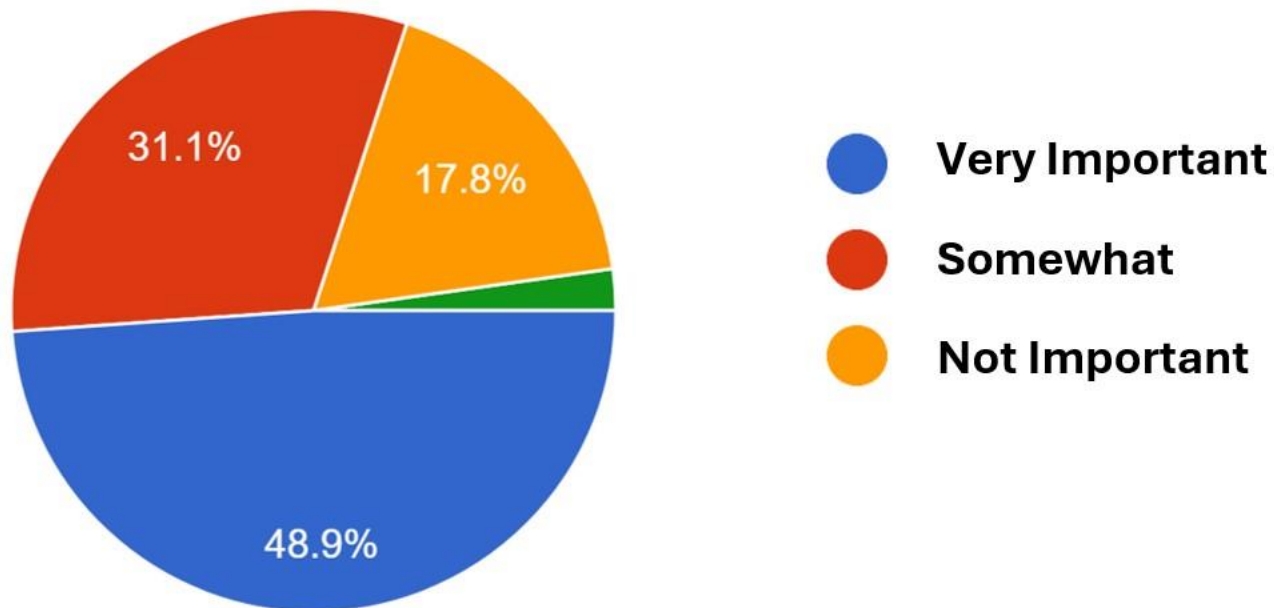
Active Park ha/1000 people



Includes School Playgrounds

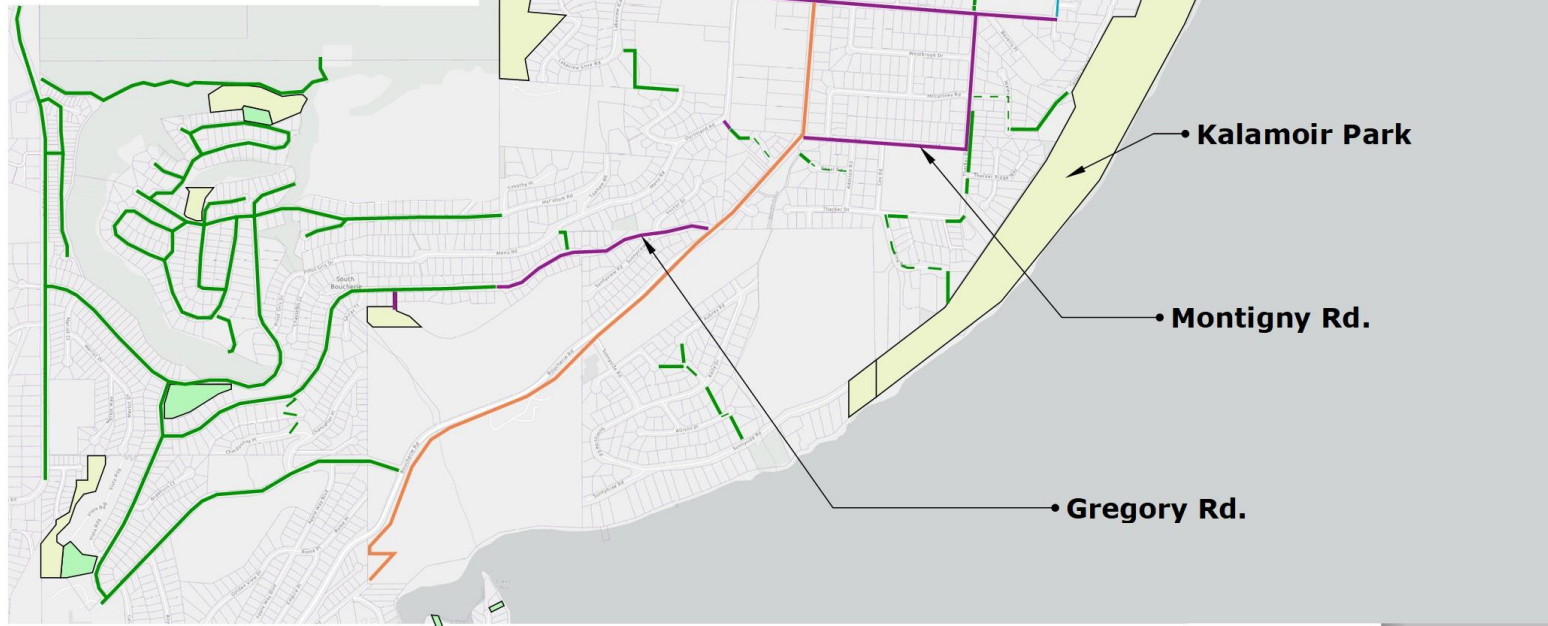
Survey shows Bike path Walkways to be very important.

Bike path Walkways



LEGEND

- Existing Sidewalks/Walkways
- Existing Bike Lane
- Active (Play) Parks
- Passive (Natural) Parks
- New Multiuse Pathway
- Proposed Bike Lane or Walkway

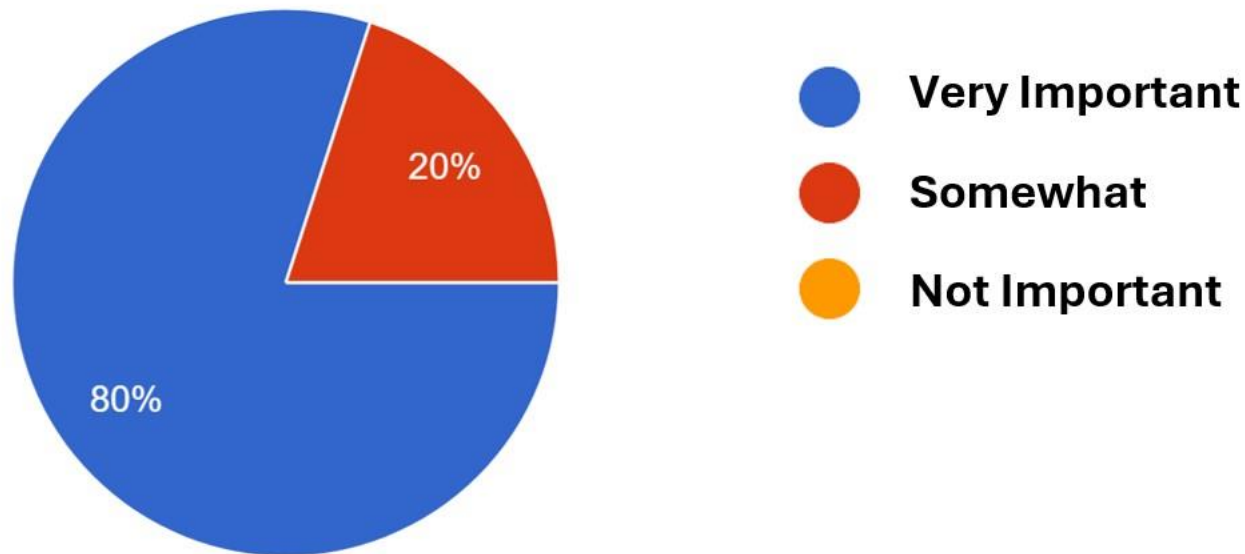




We don't necessarily need expensive sidewalks. Asphalt bike path walkways are often sufficient.

Survey shows That Homelessness and Theft is certainly an important issue, but it is not clear what we can do at the neighbourhood association level.

Homelessness and Theft



LVHCA Conclusions

We are seriously underserved for active parks and need to find a solution very quickly.

Walkways are very important to our residents, but they are not part of the Trails Master Plan.

Homelessness and Theft remain an important issue.