



SHANNON LAKE
NEIGHBOURHOOD ASSOCIATION

SLNA Executive

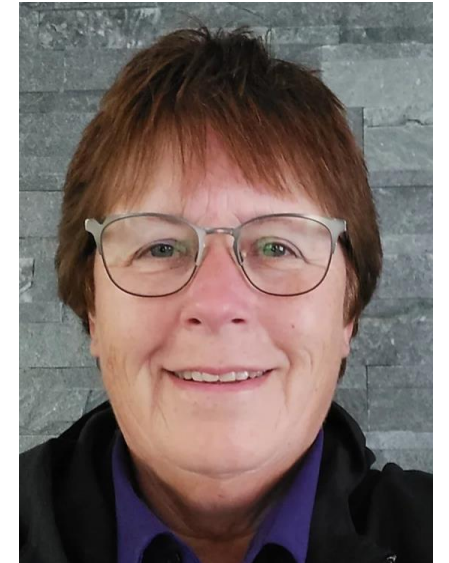
President
**Tom
Groat**



Vice-president
**Mick
Wood**



Secretary
**Laurie
Campbell**



Director
**Tony
Rippon**



Treasurer
**Dorothy
Ammerlaan**



Director
**Laurel
Harris**







SHANNON LAKE
NEIGHBOURHOOD ASSOCIATION

RECENT HIGHLIGHTS



Meet The Candidates Events



October 1st



ELECTIONS BC
Province of British Columbia



Breakfast with Santa



December 1st





McDougall Creek Fire Mitigation



February 1st



**West Kelowna
Neighbourhood**

**Associations General
Meeting**

April 23rd



CASA LOMA
COMMUNITY ASSOCIATION



SHANNON LAKE
NEIGHBOURHOOD ASSOCIATION



LAKEVIEW HEIGHTS
COMMUNITY ASSOCIATION



G R A



GREEN BAY
COMMUNITY ASSOCIATION





SLNA DINNER & DANCE



Coming June 7th



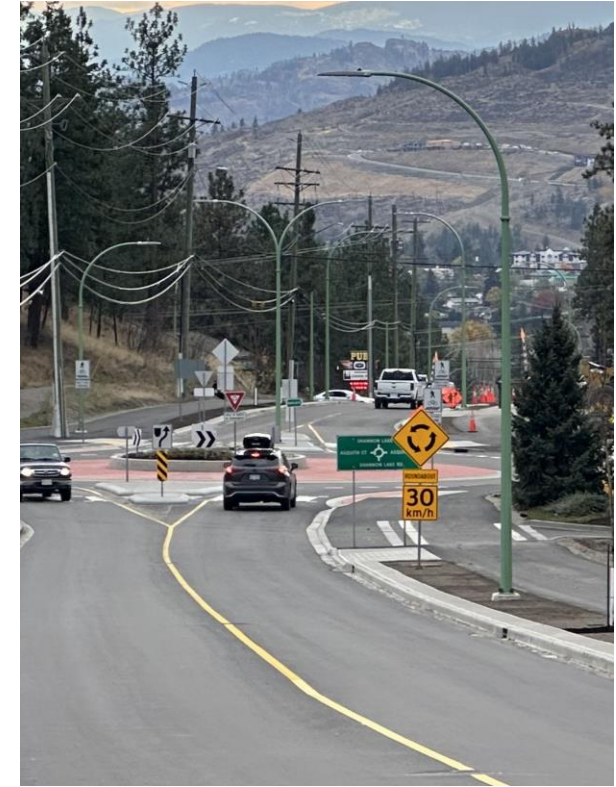
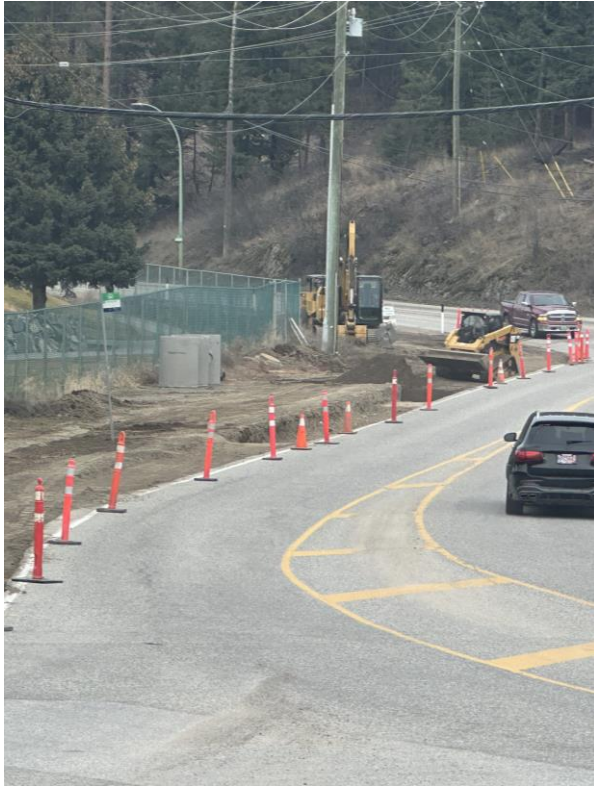


SHANNON LAKE
NEIGHBOURHOOD ASSOCIATION

SLNA INITIATIVES and REQUESTS TO COUNCIL



REQUEST: Revisions to PHASE II of the Shannon Lake Road – Active Infrastructure Project



REQUEST: Solar Powered “Your Speed” LED Feedback Sign adjacent to Crystal Springs MHP



REQUEST: Council's “Support in Principle” and feasibility report for Community Centre / Day Care at 2490 Shannon Lake Road





SHANNON LAKE
NEIGHBOURHOOD ASSOCIATION

COMMUNITY INITIATIVES and REQUESTS TO COUNCIL



REQUEST: Firm Commitment and Timeline from BC Hydro on a Power Redundancy



- **Commit to a clear CPCN submission timeline.**
- **Expedite required environmental and community studies.**
- **Provide a firm schedule for project completion.**

REQUEST: Inclusion of NA's Contact Information on the city website

Our Community

- ❑ Welcoming & Caring Community
 - General Community Resources
 - Neighbourhood Associations Contact Information



Support For: The Elimination of a Building Permit Fee for Residential Solar Installation



**City of West Kelowna
fee to resident for a
10KW Solar Project**

Electrical Permit - \$181

Building Permit - \$1,200

Support for: A Strategic Framework for Parkland Acquisition and Developer Contributions



- **Increase park funding charges**
- **Create a mechanism to identify/purchase park land.**
- **Establish criteria for developer's contribution of land.**



THANK YOU