

Addressing Complex Social Issues In and With Communities

Responses to homelessness

**Presented by
Naomi Woodland, Housing Initiatives
Manager, UWBC**

Working in Partnership



United Way
British Columbia

Today's Agenda

1. Local Responses to Homelessness
2. What is 100 More Homes?
3. Multisectoral Collaboration in Action
4. Moving from Crisis to Prevention
5. West Kelowna Future Thinking



United Way
British Columbia

Working with communities in
BC's North, Interior, Lower Mainland,
Central & Northern Vancouver Island



Local Responses to Homelessness

Over time the City of West Kelowna has seen an increased pressure on housing availability and affordability.

- Provincial response is the Belonging in BC strategy – guiding much of the work around homelessness services and emergency housing options
- McDougall Creek Wildfire signified a critical point in local need for support
- Parallel growth of demand in Kelowna has seen some migration of underhoused people between communities
- Need for coordination of services helped foster the **Westside Ending Homelessness Table**



Local Responses to Homelessness



- Established in early 2024 – previous group met to address similar needs "West Kelowna Shelter Society"
- Mandate:
 - No single group or organization can successfully end homelessness on its own
 - WEH will identify, amplify unmet needs and coordinate the actions necessary to prevent and address homelessness in the Westside area
- Currently WEH is organically growing as a leadership group
 - Coordinated response to winter weather needs in 2024/2025
 - Advocating for increased focus on Westside unhoused needs
 - Supporting need for site where people can access services
 - Coordinating outreach supports in the community
 - Developing funding and resourcing model to support the work

- 1. Provide strategic direction and work collaboratively to prevent and address homelessness in the Westside area**
- 2. Increase access to housing and supports**
- 3. Foster community awareness, education and engagement in these issues**

100 More Homes Activity

- United Way BC has provided the **administrative infrastructure for 8 years** (supported by the City of Penticton for 3 years)
- **Full Time Strategy Coordinator** in post since 2022 – supported an increase in membership of 56%
- Continuous Communication – increased staffing has **enhanced communication** internally and externally
- **Leadership** of the backbone organization has empowered the collective to **launch new initiatives** like the Housing Action Table & Lived/Living Experience Table
- Centering people with Lived and Living Experience with 6 public engagements and monthly community clean ups



100 More Homes History

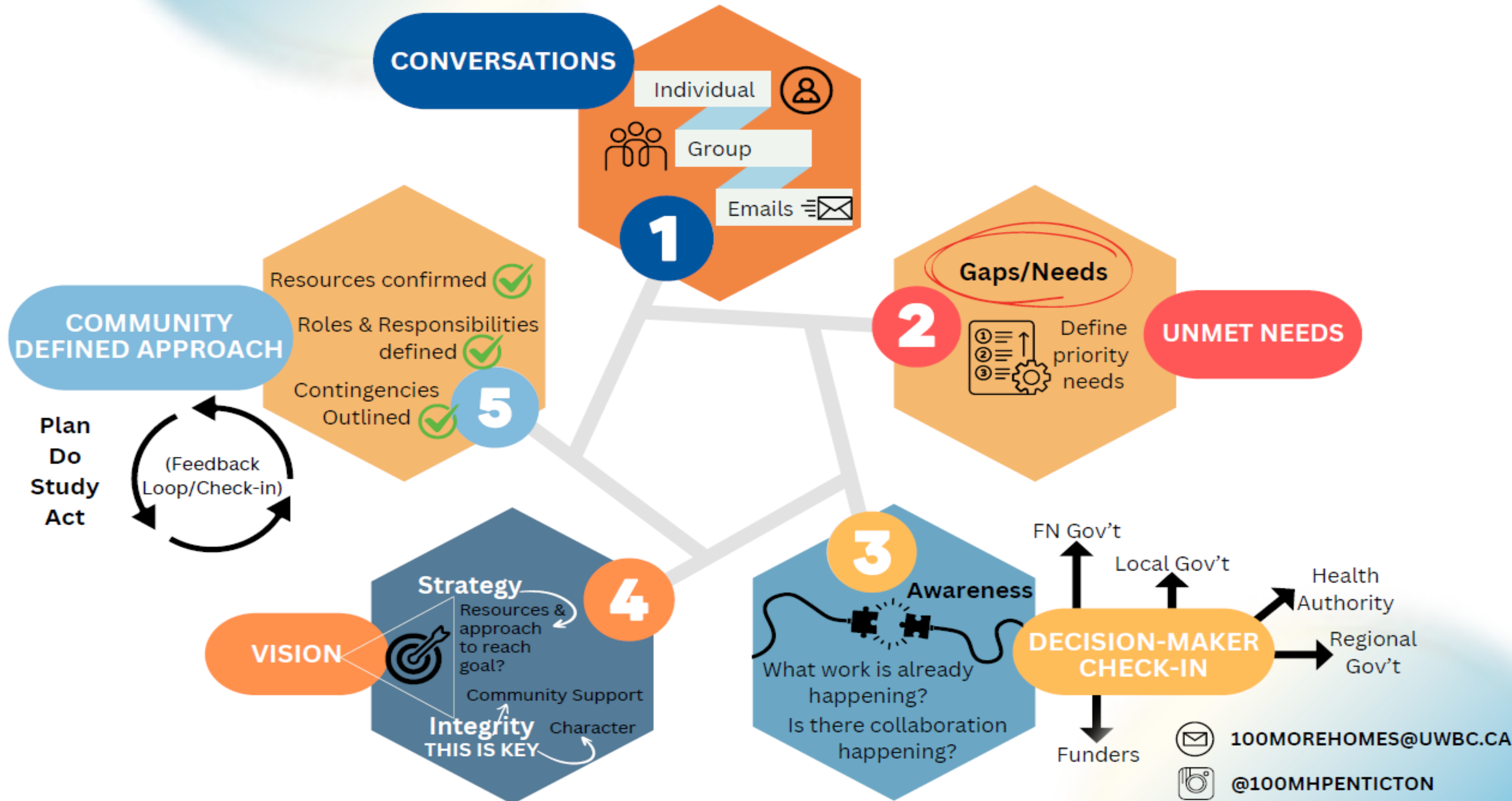


GUIDE TO MULTI-SECTOR COLLABORATION



United Way
British Columbia

Working with communities in
BC's North, Interior, Lower Mainland,
Central & Northern Vancouver Island



What Has Been Achieved

100 More Homes has grown in strength and capability through its multi-sectoral approach to collaboration:

- Emergency Response
- Public & Community Engagement
- Strategic Proposals & Presentations
- Facilitated Cross-sector collaboration
- Community Clean Ups
- Attracted funding and other investment to the community

Providing agile and coordinated responses to ongoing social needs across communities



APRIL 10, 2025 | 4:30PM - 5:30PM

2965 SOUTH MAIN ST, PENTICTON

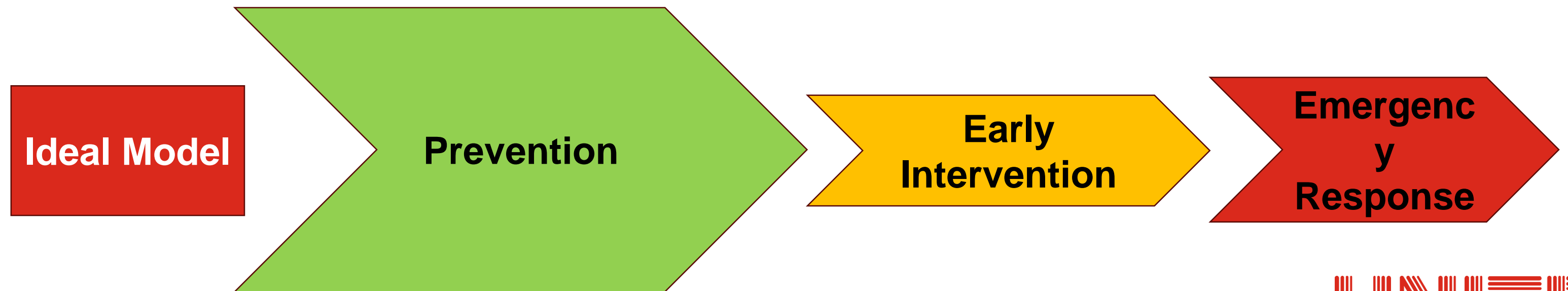
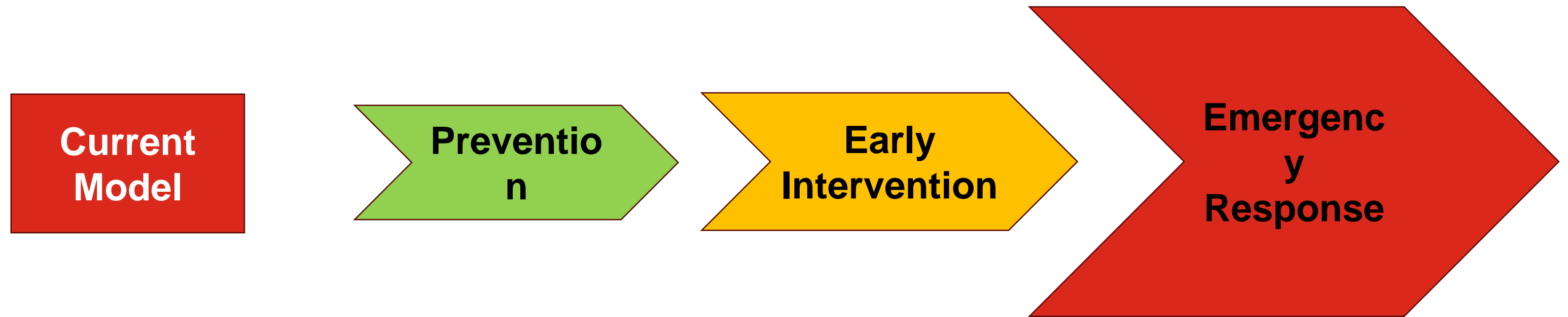
PENTICTON SENIORS DROP-IN CENTRE SOCIETY



United Way
British Columbia

Working with communities in
BC's North, Interior, Lower Mainland,
Central & Northern Vancouver Island

Investments in Community Supports



Community Based Partnerships



WESTBANK
FIRST NATION



Core principles in relational work to address complex community issues:

- Collective Impact
- Bringing multiple and diverse partners together
- Connecting community members to identify shared goals and approach



Kelowna

PEOPLE



UNITED
for people in need

Future Thinking in West Kelowna

What does West Kelowna need to better coordinate resources locally that prevent and address homelessness?

Consider exploring backbone supports for this work in the West Kelowna and Westside area

Consider partnership and relationship building in this space with Westbank First Nation



United Way
British Columbia

Working with communities in
BC's North, Interior, Lower Mainland,
Central & Northern Vancouver Island

Thank you & Questions



United Way
British Columbia

UNITED
for people in need