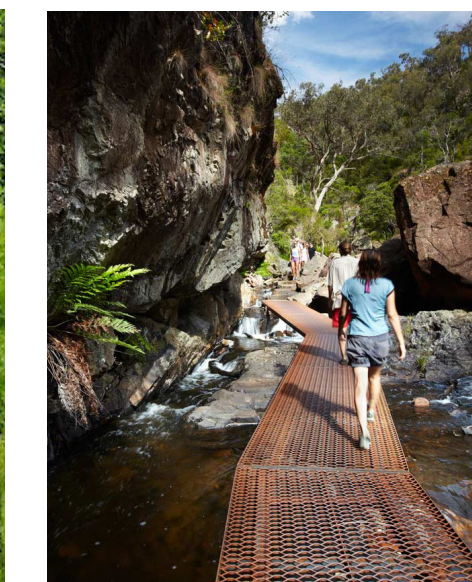
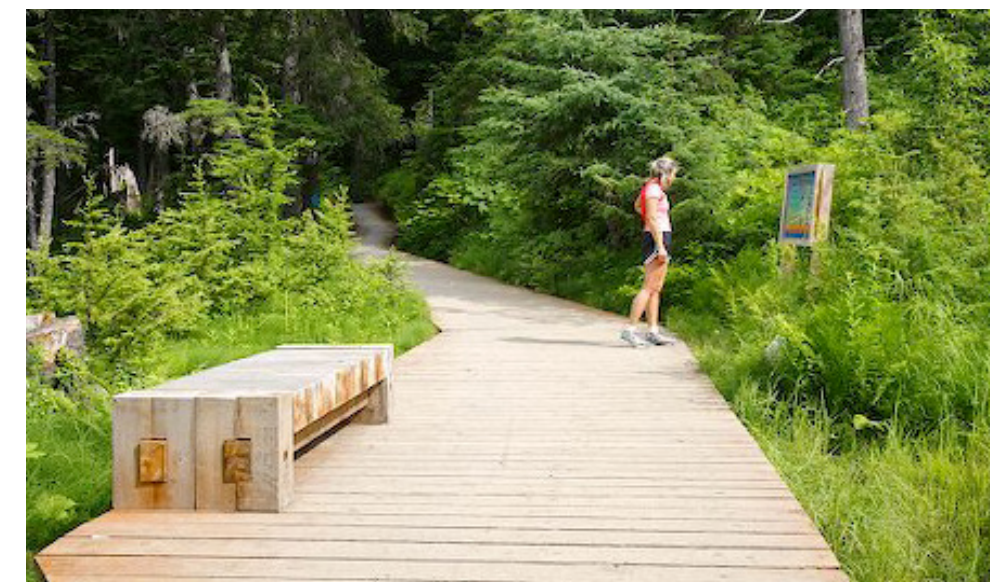
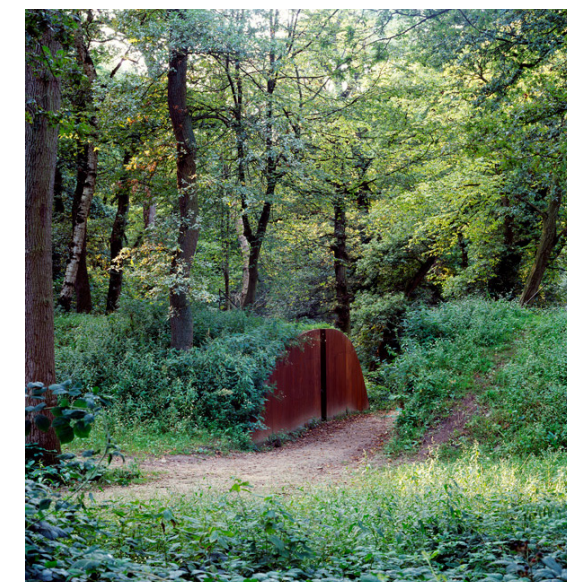


SMITH CREEK MASTERPLAN



Trails and Trail Signage

Street and Nature Crossings

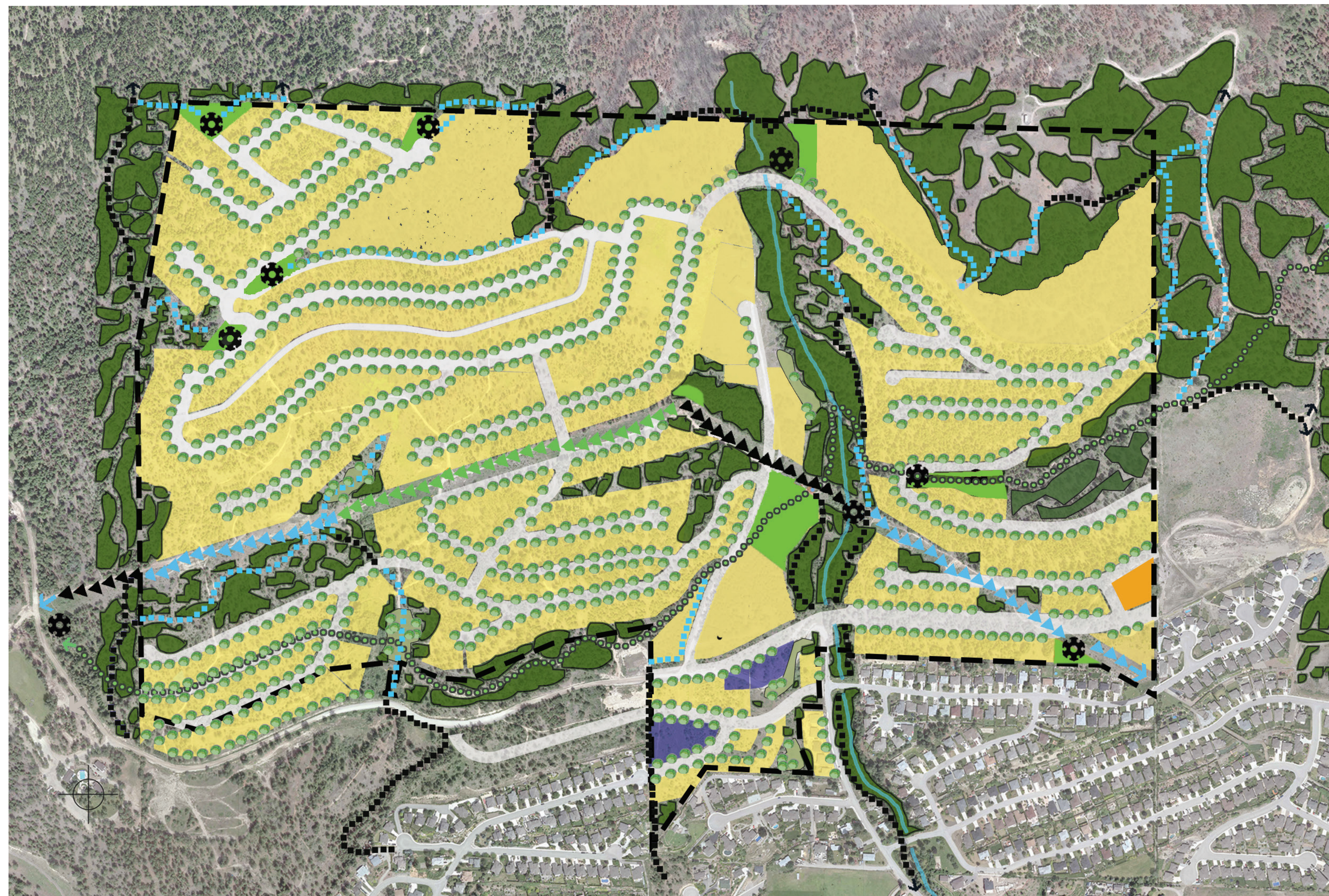
Viewing Decks

Boardwalks and Creek Crossings

Park Furniture

LEGEND

- Flume Trail:** 10m - 20m
Difficulty: Easy - Green, Moderate - Blue, Difficult - Black
- BC Hydro ROW and Path:**
Difficulty: Easy - Green, Moderate - Blue, Difficult - Black
- Nature Trail / Footpaths:** 0.5m-1.5m
Difficulty: Easy - Green, Moderate - Blue, Difficult - Black
- Parks**
- Trail Access Area**
- Streetscape**
- Natural Hillside / Greenbelt**
- Single Family Residential**
- Townhome Residential**
- Residential / Commercial**
- Property Boundary**
- BC Hydro ROW**



Landscape Character:

The site is an established native hillside, with Ponderosa Pine, Douglas Fir and Bluebunch wheat grass spreading across the undulating topography, providing a stunning backdrop for the proposed development.

The development's intent is to allow large pockets of this native hillside to be retained for both recreation and a sense of place, and then adding to this and enhancing the communities experience through this native vegetation. The connectivity between the existing Smith Creek sub-division and the proposed development is important to create a sense of community, allowing access through to the myriad of trails on the surrounding crown land.

The historic Flume Trail is a significant landmark which will be embraced and highlighted with interpretive signage and many connections to the existing and future trail network. Access along tree lined streets will allow homeowners to cross the development and have access to this fantastic amenity, along with the multi-use path running east to west through the dedicated BC Hydro ROW.

This trail and streetscape will provide access to the many parks dedicated to the proposed development, encouraging active and passive zones for both children and adults. These will create a holistic environment of both natural and manicured amenities, establishing a sense of community.

The landscape character will further enhance the mixed housing typology, with landscaped streets, street lighting and street furniture throughout the development. The re-instatement of native vegetation into areas connecting to the natural hillside will be encouraged, with planting adapted to the Okanagan climate being used throughout the development.

Flume Trail:

This trail system is historic and varies along the route, but in general is moderately wide 10 - 20m and is compacted native soils and gravels, providing a stable surface. It is a multi-use path system used by walkers, hikers, mountain bikers, horse riders meandering through the native Ponderosa Pine forest and grasslands, which show of the Okanagan's wildflowers in spring. The trail rating is of easy, as it follows contours through ravines and hillside.

BC Hydro ROW and Path:

This trail is to remain as a multi-use pathway system, running along the ROW route. It is an exposed park with no trees, but has wonderful native grasses and shrubs stretching throughout the area. The trail rating is easy to difficult as it runs along the hillside, and can be used by walkers, strollers, scooters, cyclists and joggers.

Nature Trail / Footpaths:

These trails vary between 0.3 - 1m in width, of compacted native soils or aggregates and have in many cases been created by hikers or mountain bikers. The trails traverse the hillside and connect with one another through beautiful forested and open tracks of the hillside, allowing one to immerse oneself in the natural environment. These trails would be used by hikers or mountain bikers as they are moderate to difficult.

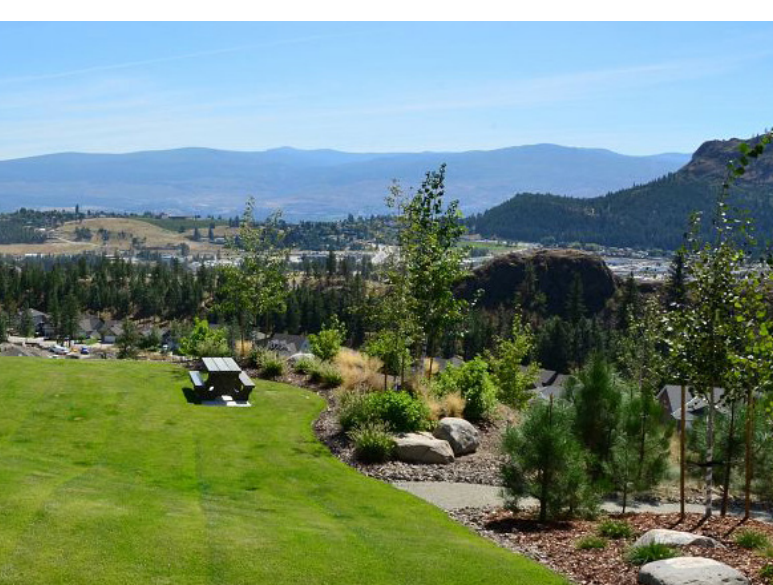


Fig. 16

December 2019



ecora



Parks

Streetscape and Pathways

Interpretive Signage

Trail Access Areas