

Memorandum

Attention:	Nilton Praticante	File No.:	A25-050
Organization:	City of West Kelowna	Project:	Commemorative Crosswalk
Phone:		Date:	October 14, 2025
Email:	Nilton.Praticante@westkelownacity.ca	Revision:	0
cc:	Dana Graves		

RE: Commemorative Crosswalk Design & Location

1 Introduction

Align Engineering Ltd. (ALIGN) was retained by the City of West Kelowna to provide a high-level review of a commemorative crosswalk design and location. The Royal Canadian Legion has requested a commemorative crosswalk be painted at the corner of Elliott Road & Dobbin Road (Highway 97) to honour veterans. This memorandum provides a review of the markings, design standards, and suggestions on the location.

2 Design

The proposed design of the commemorative crosswalk provided by the Royal Canadian Legion is shown below in **FIGURE 1**. It is designed to a standard 2.5-m minimum width crosswalk. The design shows the decorative elements placed on top of a ladder crosswalk, which are not used in British Columbia.

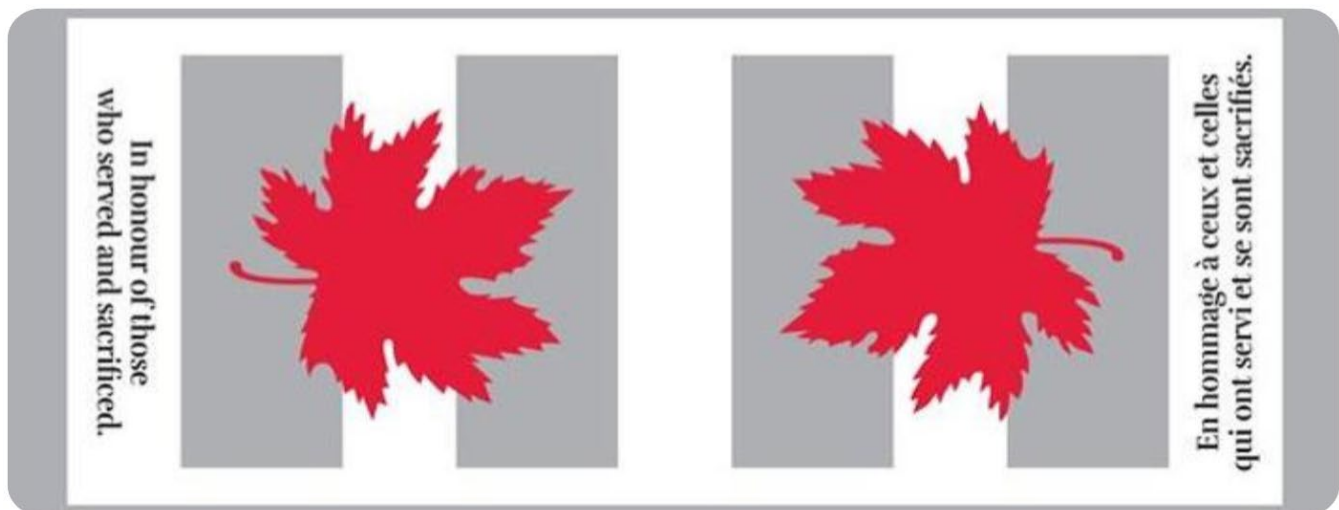


Figure 1: Royal Canadian Legion Sanctioned Commemorative Crosswalk Design

There are two crosswalk formats (**FIGURE 2**) that are used in British Columbia. They are: (1) the twin parallel line crosswalk which are used at stop control and signalized crossings and (2) the zebra crosswalk which are used for crossings controlled by Pedestrian Crosswalk, School Crosswalk, or Yield signs.

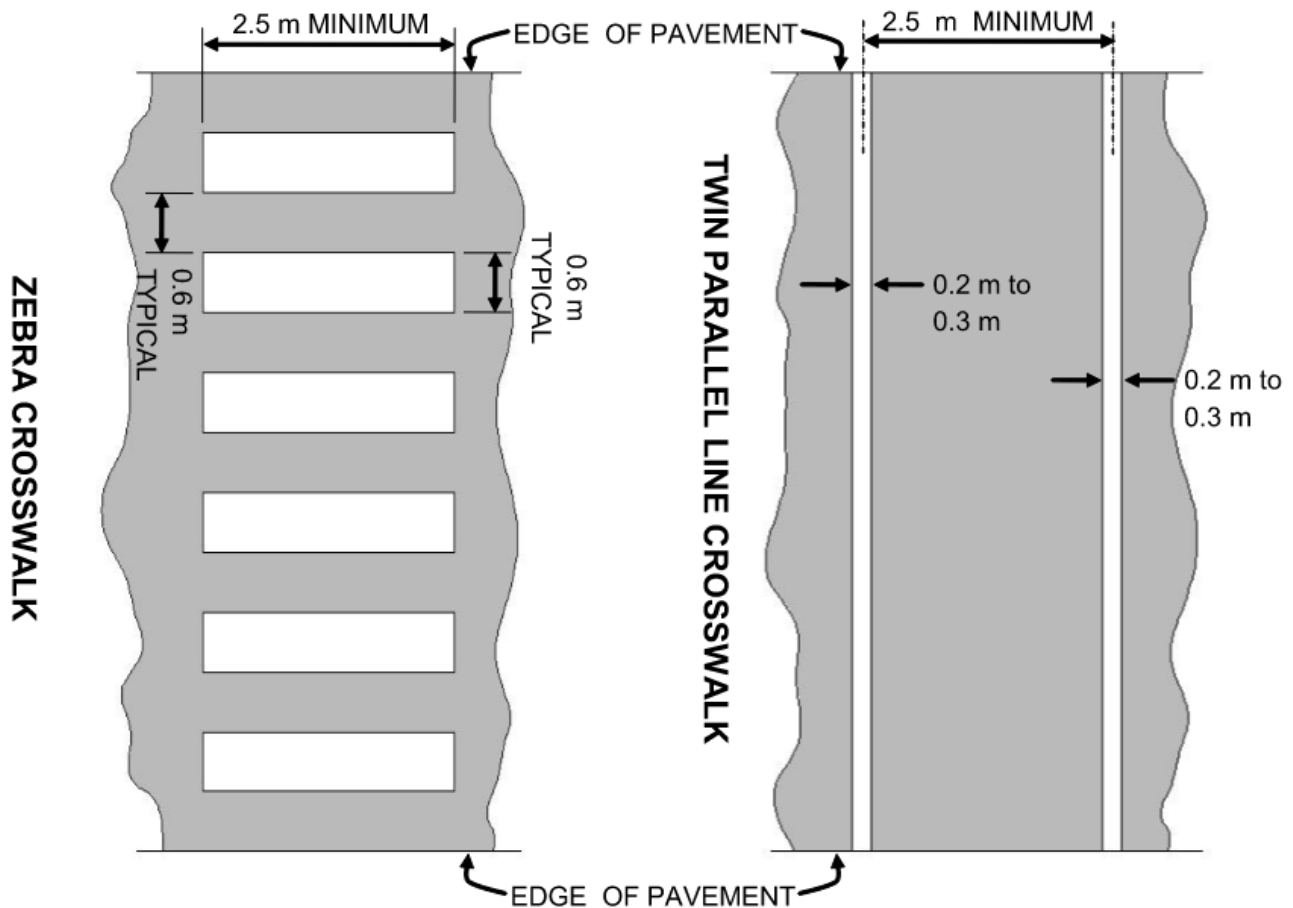


Figure 2: Zebra Crosswalk Marker (Left) Twin Parallel Line Crosswalk Marking (Right)

Source: Transportation Association of Canada - Manual of Uniform Traffic Control Devices for Canada

The Transportation Association of Canada commissioned a study on *Non-Standard Pavement Markings for Crosswalks* which was completed in April 2023. This study looked into concerns of safety impacts related to decorative and other non-standard crosswalks that included crosswalk conspicuity, driver recognition and reaction, and driver and pedestrian distraction. This led to TAC developing design standards and guidance for the use of non-standard pavement markings (which include decorative crosswalk markings) which were adopted in October 2025. Essential elements of the standard for inclusion in the Manual of Uniform Traffic Control Devices for Canada (MUTCDC) include the following:

1. "All decorative pedestrian crosswalk pavement marking installations must be accompanied by twin parallel line crosswalk markings to ensure increased conspicuity."
2. "The standard twin parallel line crosswalk markings must be separated from the decorative elements by a minimum distance of 300 mm."
3. "All such installations must ensure there is sufficient contrast between the colours used and the standard crosswalk markings".
4. "Decorative pavement marking installations must not be used at locations where zebra or ladder pavement markings are recommended or installed."
5. "The installation of decorative pavement markings must be completed using skid resistant materials similar to those used to apply the adjacent standard crosswalk markings. Retroreflective [top coatings] must not be used for the decorative part of the crosswalk."

6. “Use of a single standard colour as described in C1.7.2 [of the MUTCDC] between parallel lines of a crosswalk as a non-standard crosswalk treatment must be avoided.”

The above design standards would require the commemorative crosswalk design shown in **FIGURE 1** to adjust as follows:

- Be placed within a warranted twin parallel line crosswalk.
- Remove white bars (ladder/zebra markings) placed between the twin parallel lines.
- Maintain a 300 mm gap on the inside of the twin parallel lines for contrast. Width can be added to the crosswalk should the location have sufficient room at the location, increasing to a 3.1-m minimum.
- A background colour can be used for the text as long as it does not extend to the twin parallel lines. This should be located within 300 mm of the edge of pavement so pedestrians do not linger in the crosswalk to read the message.

3 Location

The location for the commemorative crosswalk have been suggested for placement at Dobbin Road & Elliott Road (**FIGURE 3**) or Dobbin Road & Brown Road. Dobbin Road & Elliott Road was suggested by the Royal Canadian Legion for its proximity and connection to the Royal Canadian Legion Westbank Branch #288 at 6-2525 Dobbin Road. Dobbin Road is part of the Highway 97 couplet and within the jurisdiction of the Ministry of Transportation & Transit (MoTT) requiring their approval for implementation of the non-standard crosswalk marking. Locations along Dobbin Road would see higher traffic volumes increasing wear and therefore increasing maintenance costs.

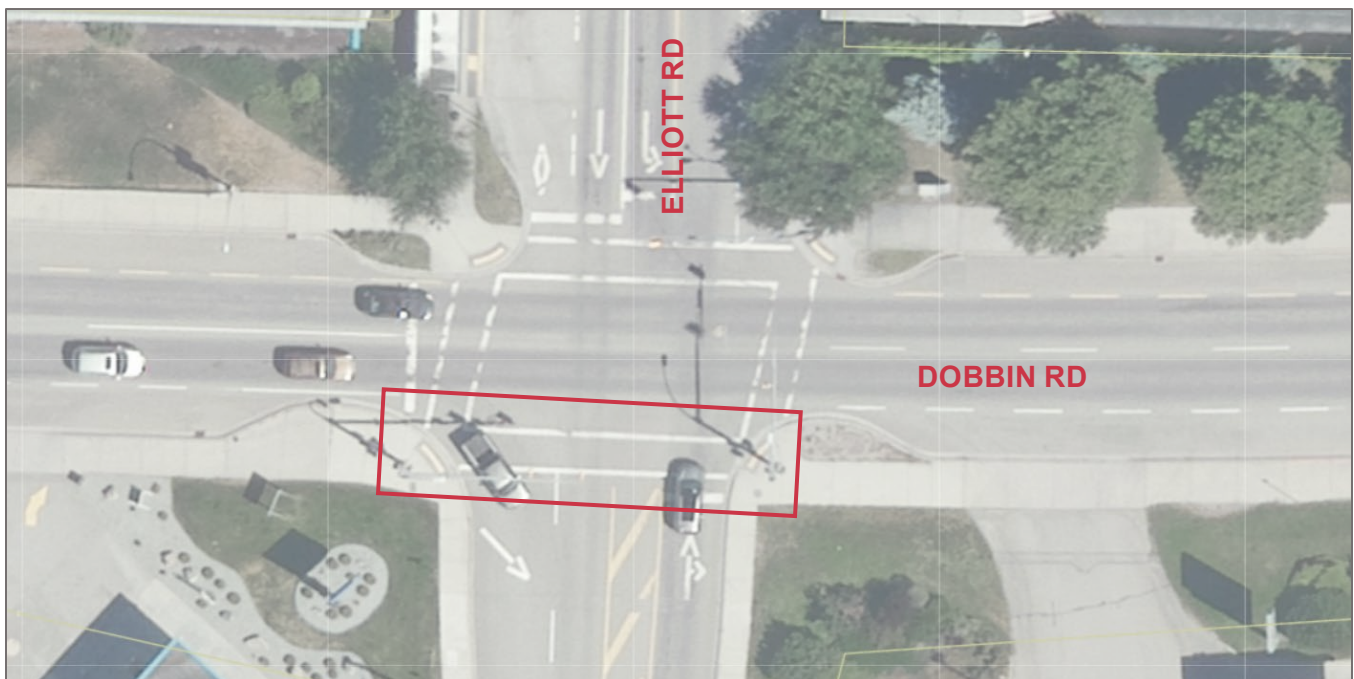


Figure 3: Dobbin Rd & Elliott Rd Potential Commemorative Crosswalk Location

There are alternate locations where there are lower traffic volumes, wider twin parallel crossings, and are within the City’s jurisdiction. Brown Road north of Main Street would support these criteria though it is farther from the local Legion Westbank Branch. The crosswalk at Brown Road and Drought Road is suggested for its width and lower motor vehicle traffic volumes (**FIGURE 4**).

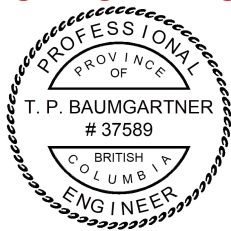


Figure 4: Brown Rd & Drought Rd Suggested Commemorative Crosswalk Location

Please contact me at 250-870-3865 if there are any questions or comments. Thank you.

Sincerely,

Align Engineering Ltd



2025-10-14

Tom Baumgartner, MSc, P.Eng., RSP

Senior Transportation Engineer | Principal

Permit to Practice Number: 1000340

