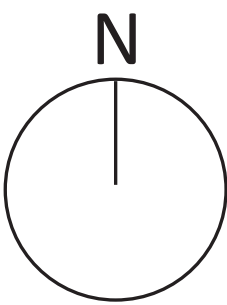
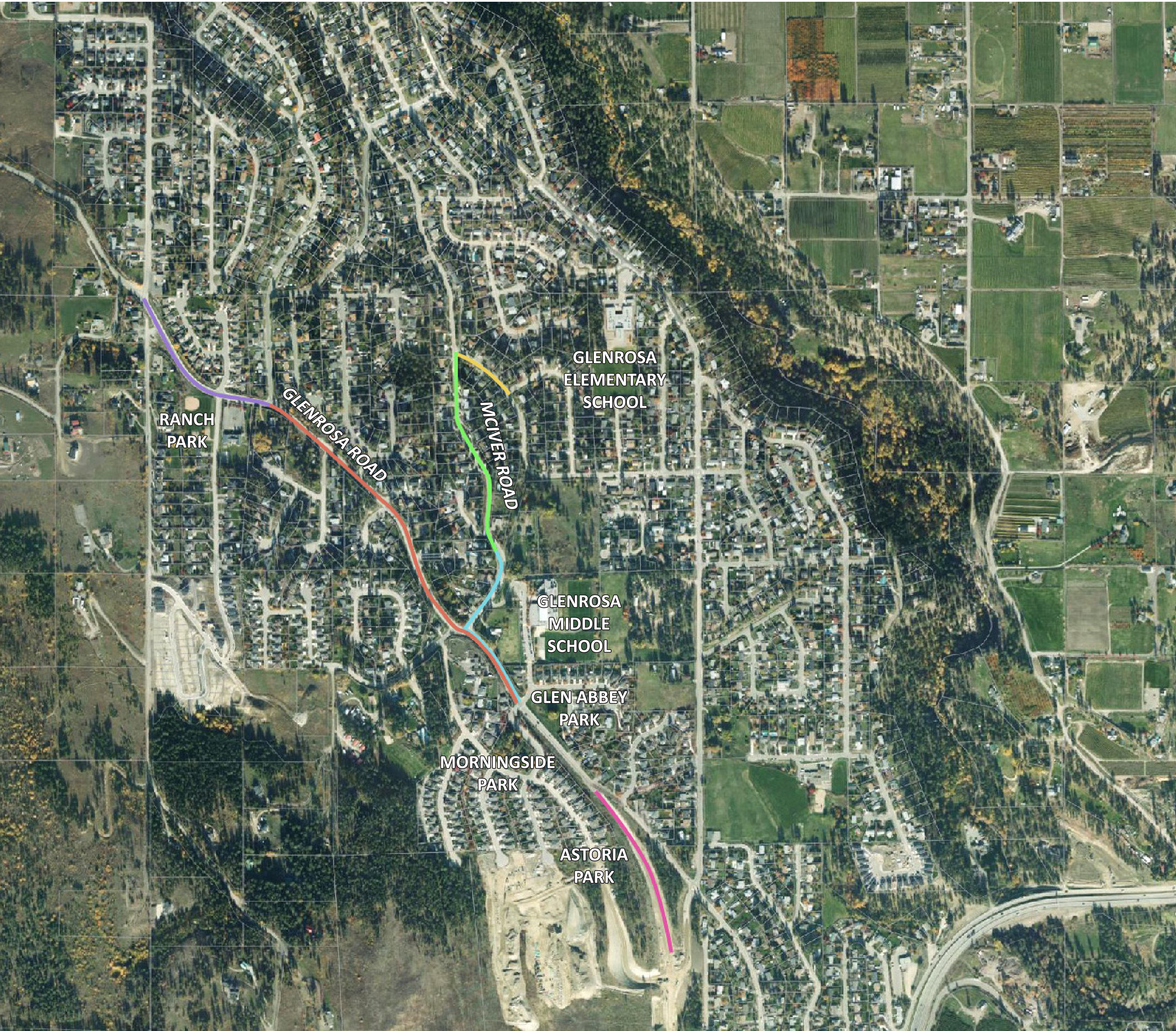


PROJECT CONTEXT MAP



LEGEND

- GLENROSA ROAD IMPROVEMENTS**
MCGINNIS ROAD TO GLEN ABBEY PLACE
refer to panel 3 and scroll
- WATER MAIN**
MCIVER ROAD AND GORMAN ROAD
refer to panel 4
- MCIVER ROAD**
PEDESTRIAN IMPROVEMENTS
refer to panel 5
- MCTAGGART ROAD**
DRAINAGE IMPROVEMENTS
will convey storm water underground along McIver Road from Glenrosa Road to McTaggart Road into an existing open ditch network.
- GLENROSA ROAD**
EROSION PROTECTION
will correct erosive conditions in the open channel between Gates Road and Ranch Road, improve ditch stability and prevent deposition in downstream sections.
- GLENROSA SIDEWALK**
GLEN ABBEY TO WEBBER
will connect the Glenrosa Road sidewalk to the Webber Road roundabout to connect a 1.6 km sidewalk network.

PROJECT TIMELINE

