










# Homesite Severance - 3536 Paynter Road

## Legend

### Landmarks

-  Cemetery
-  City Hall
-  Community Centre
-  Dam
-  Fire Hall
-  Museum
-  RCMP
-  School

 Tax Parcels

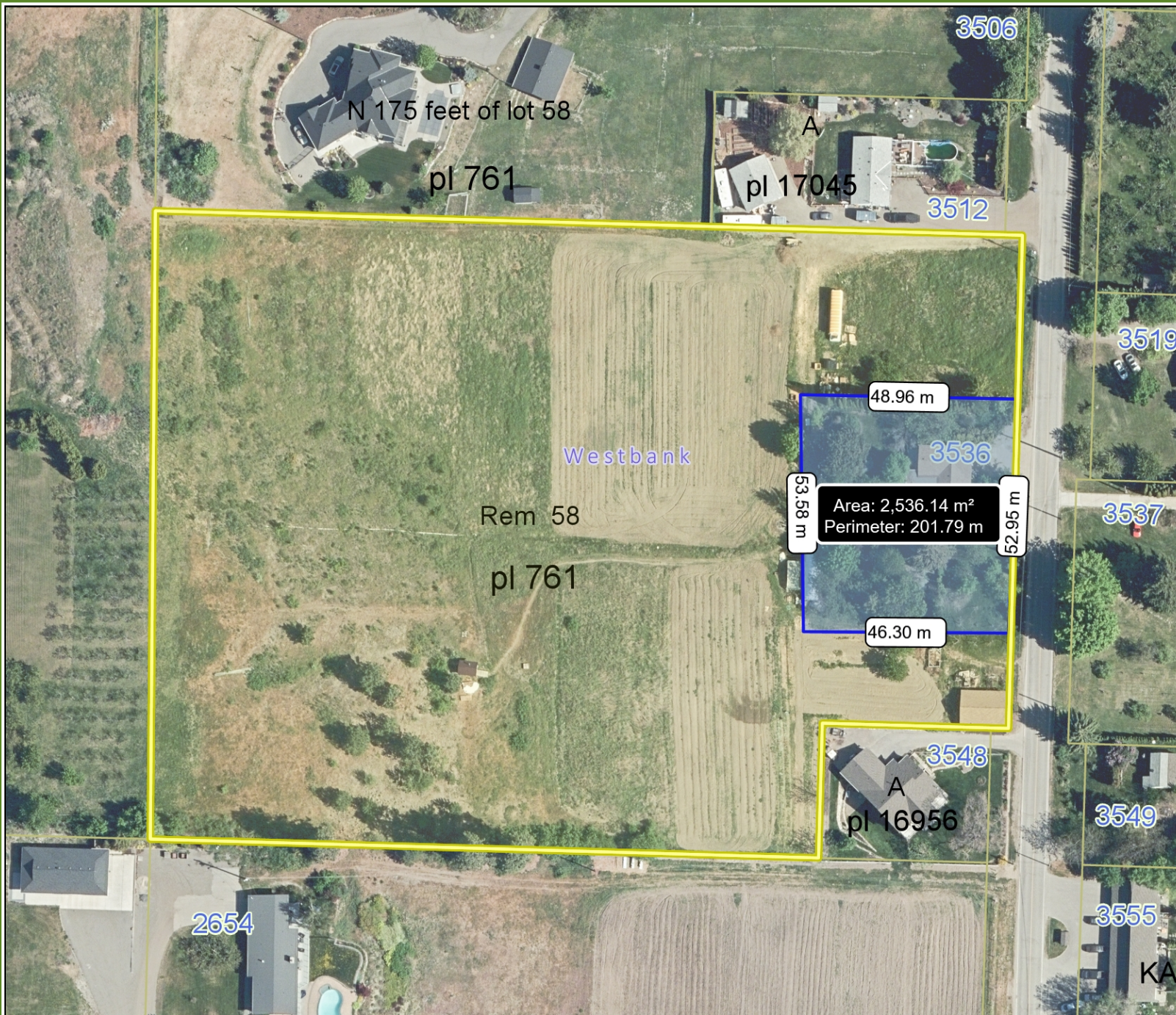
### Basemap Parcel Type

- |   |  |
|---|--|
|  Ownership         |  Lease              |
|  Land Strata       |  Park               |
|  Building Strata  |  Road Right-Of-Way |
|  Common Property |  Walkway          |
|  Crown Land      |  Common Access    |



**Scale** 1 : 1,250

## Notes



0 32 64 Meters

Map Projection: NAD\_1983\_UTM\_Zone\_11N

© City of West Kelowna

Map Produced on: 12/15/2020 12:08:07 PM



This map has been produced by the City of West Kelowna's Geographic Information System. The data provided is derived from a variety of sources with varying levels of accuracy. The City of West Kelowna makes no warranty or representation, expressed or implied, with the regard to the correctness, accuracy and/or reliability of the information contained herein.