



Parks & Fleet Operations Team Highlight

Stacey Harding, Manager
Parks & Fleet Operations



Meet the Team





What We Do



Parks, Streetscapes, Facility grounds Operations & Maintenance



Fleet Operations



Cemetery Services & Operations



How We Support Our City/Citizens





Fleet & Specialized Mechanic Repairs





Fleet Administration

- Annual Insurance Renewals
- New Purchase Registrations
- Fuel Card Admin.
- Software Admin.
- Fleet Accident Reporting & Claims



Auto insurance Claims



City Property I.C.B.C Damage Claims

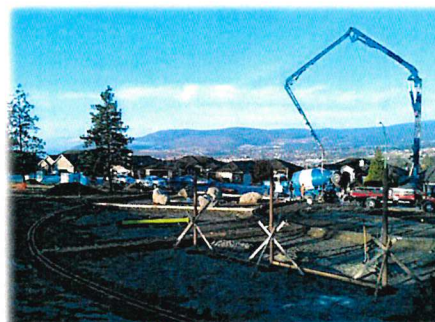




Westbank Cemetery Operations & Administration



Park Planning & Development



Urban Forestry & Urban ReLeaf Program



Park Amenity Donation Program





Community Events



Community Events





Community Events



Parks & Public Spaces





Skate Park Maintenance



Town Centre Park Kids Spray Park, Community Garden & Dog Park





Sports Dome

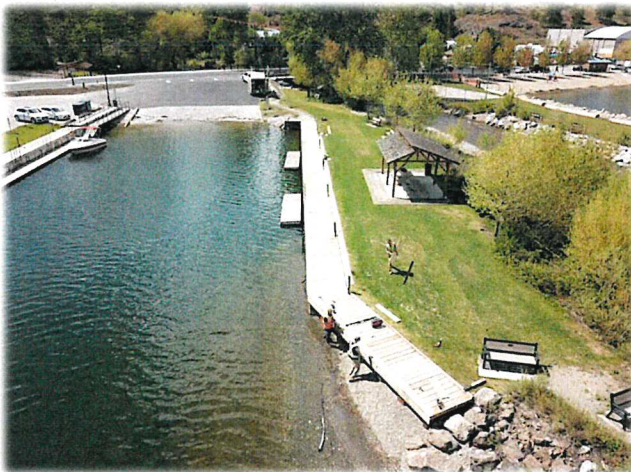


Streetscapes & Boulevards





Boat Launches - Gellatly





Boat Launches – Casa Loma



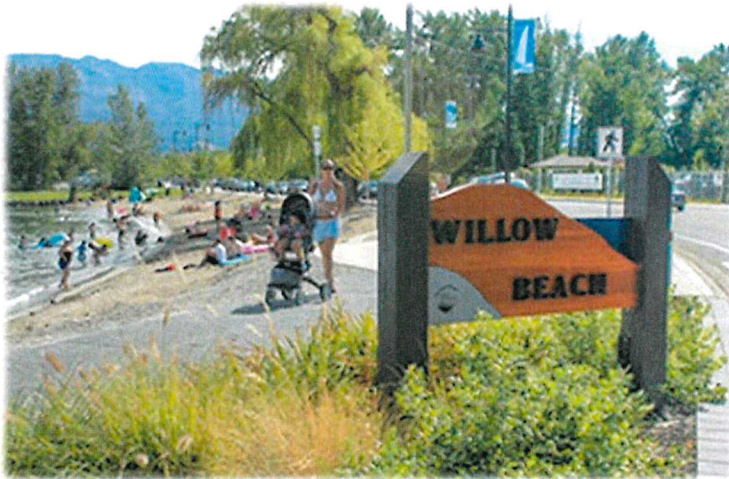
Park Maintenance





Waterfront Parks

- Beach Water Quality Testing
- Beach Sand Cleaning



Beach Volleyball Courts Pritchard Park & Willow Beach





Swim Zone Delineator Install



Playground Maintenance & Repairs





Parking Lot Maintenance - Repairs - Line Painting



Walkway Repairs & Maintenance

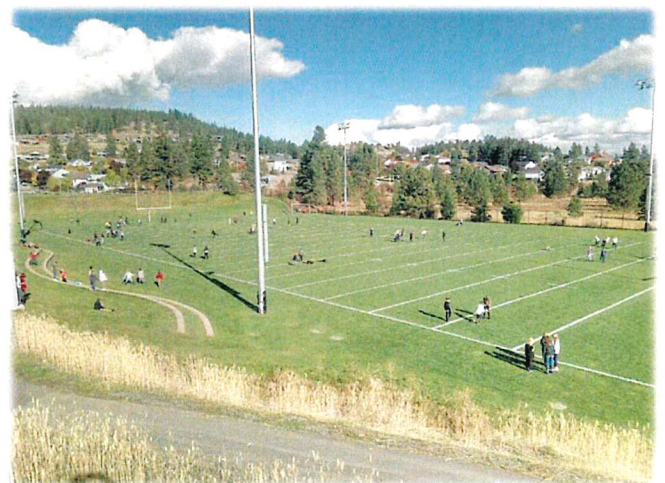




Trail Maintenance

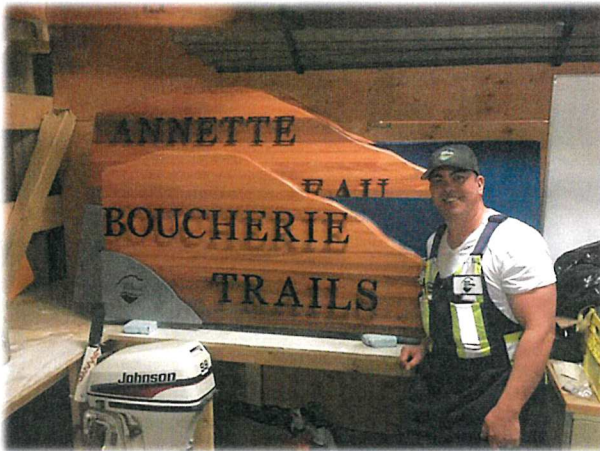


Sport Field Maintenance & Line Painting





Park Signs



Irrigation Install & Repair





Bridge Repairs

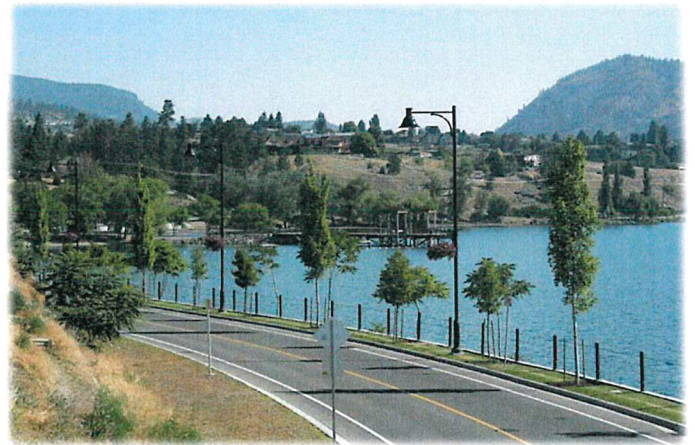
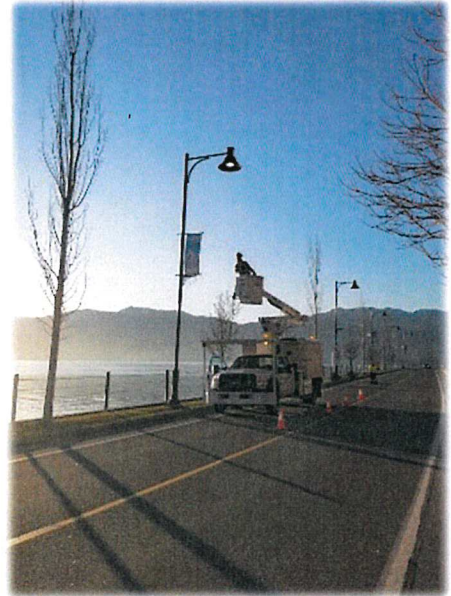


Court Maintenance & Bleacher Installation





Seasonal Banners



Seasonal Hanging Baskets



Flood & Storm Event
- Response
- Recovery



Snow Removal





Landscape Improvements



Forest Fuel Modification





Homeless Camp Cleanup



Vandalism





Vandalism



Commemorative Tree Planting

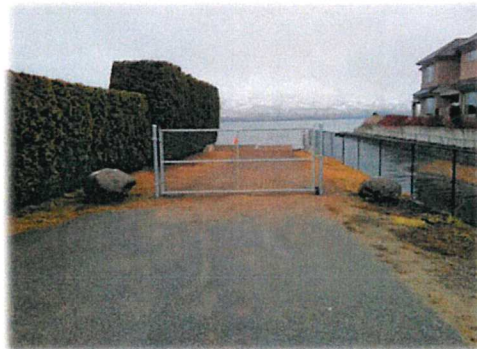




Some other PROJECTS



Additional Projects





Public Works Department

- Water Supply / Treatment / Distribution, Waste Water Collection
- Roads and Drainage
- 1 Manager
- 3 Supervisors
- 2 Clerks
- 1 Technical Coordinator
- 5 Foremen
- 3 Tradesmen
- 22 Operators (Roads, Utilities, Treatment)
- Approximately \$25M worth of annual operating



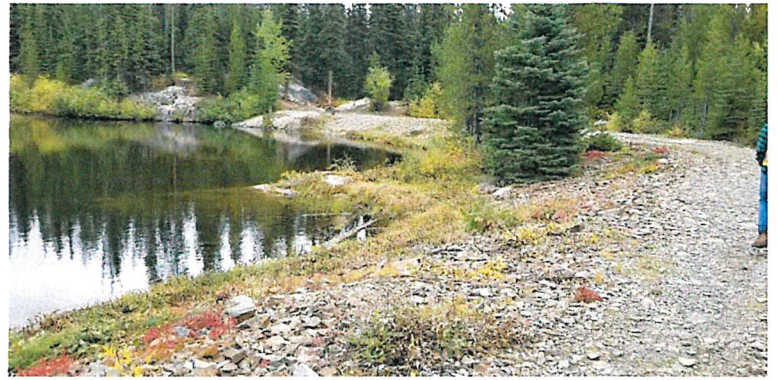
Water Supply / Watershed

- Two Okanagan Lake intakes for the current WKE and Sunnyside/Pritchard Systems.
- 9 reservoir lakes and 15 dams between the Powers and Lambly Watersheds that contribute service to the Powers Creek and Rose Valley Water Service Areas.
- Various diversion ditches to help capture and retain freshet.



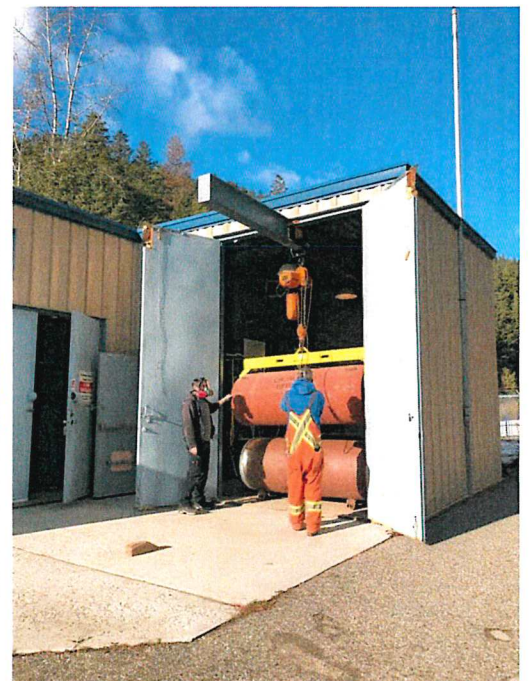


Watershed



Water Treatment

- Primary treatment (chlorine) at Okanagan intakes.
- Powers Creek TP averages approx. 4.6 M cubic meters of treated water per year.
- Ongoing duties includes:
 - Lab testing
 - Water quality reporting
 - Safety compliance
 - Facility and plant operations
 - Full instrumentation and electrical services
 - Reservoir O&M
 - Chlorine gas O&M





Water Treatment

Plant operations:

- Chemical dosing
- Centrifuge O&M
- Ultraviolet O&M
- Dissolved Air Flotation
- Sand Filtration O&M
- Analytical Equipment
- Lab testing
- Intake pond O&M
- Wetland O&M
- Monthly reporting



Water Treatment

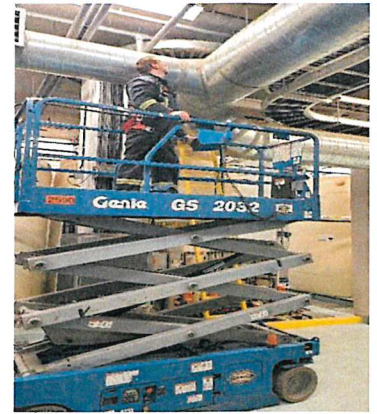
Mechanical/Electrical Highlights at the PCWTP:

- Lubrication of all rotating equipment
- Pipe fitting
- Welding
- Pump teardowns and rebuilds
- Compressor O&M
- Rotating Screen O&M
- Delta V integration and programming
- Air valve O&M
- Full electrical services





Water Treatment



Ongoing Operation and Maintenance



Water Distribution

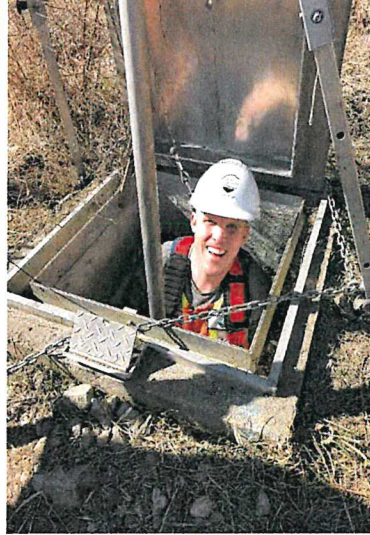
- The CWK water distribution network consists of 13 pump stations, 66 PRV stations, 1300 hydrants, approx. 280km of water main and 11, 250 water services.
- Some of the programs include Water Quality Monitoring and Reporting, Water Metering, Water Main Flushing, Leak Detection, Cross Connection Control, Hydrant Maintenance, long list of preventative maintenance





Water Distribution

Standard O&M, PRV entries, & new Capital improvements!



Water Distribution



Reactive Maintenance:

- Water Quality Challenges
- Leak investigations and repairs
- Unanticipated service interruptions
- Power outages



Water Distribution

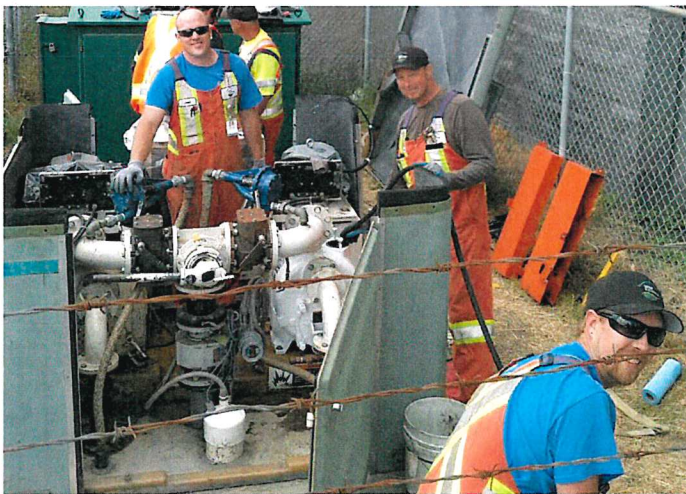


The Utilities team sees a fair amount of after hours and emergency situations both in water and waste water collections.



Waste Water Collection

- The waste water collection system consists of 29 lift stations and approx. 225 km of sewer main (gravity and force main)
- Programs include: flushing, odor control, CCTV inspection, and inflow and infiltration.





Waste Water Collection

SAFETY:

Ongoing Operation and
Maintenance



Utilities: Supporting Development





Roads



- In-house and contracted (AEL) winter road maintenance of approx. 500 lane km's of road and 40 km's of sidewalks.
- The CWK averages approx. 10-15 snow events per season.



Roads



- Those same roads and sidewalks also need to be swept every spring.
- Typically about an 8 week process that includes City streets and facility parking lots.
- The CWK also does maintenance sweeping throughout the year of approx. 50-75 km's per month.



Roads

Asphalt & sidewalk maintenance and repairs.



- Approx. 100 potholes are filled each winter/spring.
- Minor asphalt patches done in the summer.
- One of five "sidewalk zones" in the community are inspected every year and repairs are completed as per policy requirements.



Roads

Roadside vegetation control:

- Improved drainage, sightlines, and community aesthetics.
- 200 shoulder km's of roadway are mowed twice annually.
- Line trimming (hand work) is conducted during spring & summer months at approximately 200 select locations.
- Support in sightline removals.

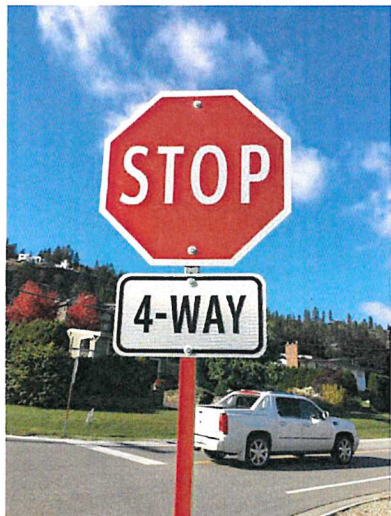


06/07/2013



Roads

Lines, Signs, and Traffic Control



Drainage



- Clean and or re-grade approx. 2km of drainage ditches annually
- Replace culverts as needed.
- Annual monitoring of key locations during spring freshet.



Drainage

Hydro – Vac:

- 2nd season for CWK
- Sanitary Sewer flushing
- Safe excavations for utility repairs
- Storm infrastructure cleaning
- Approx. 1000 catch basins per year on 4yr cycle
- Utility locating



Transit Maintenance & Curbside Collection

Support the RDCO's Waste Reduction Office with the curbside collection contract.



O&M of all Regional Transit shelters and exchanges approx. 3 times/week @ 75 locations.



T.E.A.M = Together everyone achieves more.
Anonymous

Thank you for the
opportunity to showcase
our Team's great work!

Questions?

